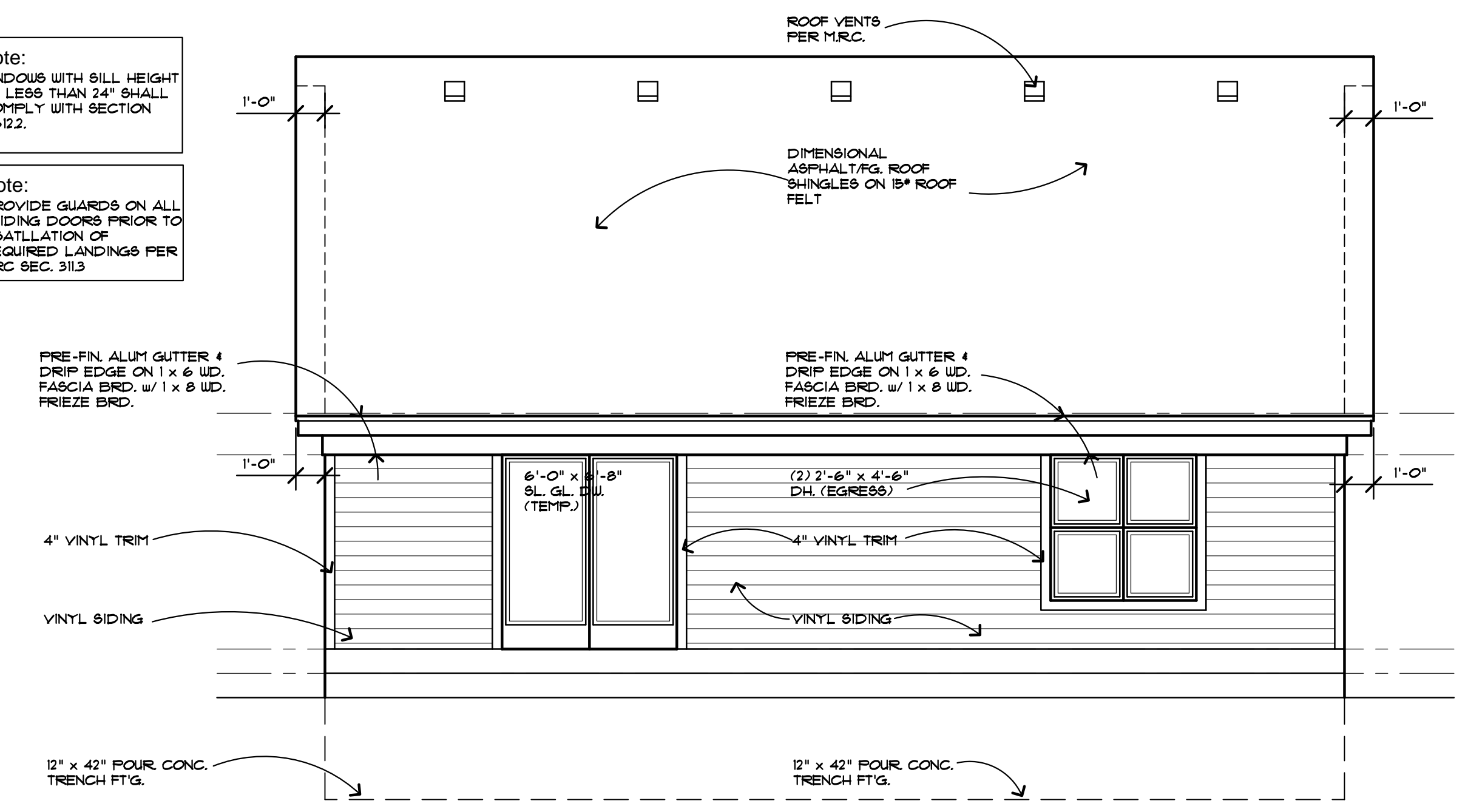


left elevation

1/4" = 1'-0"

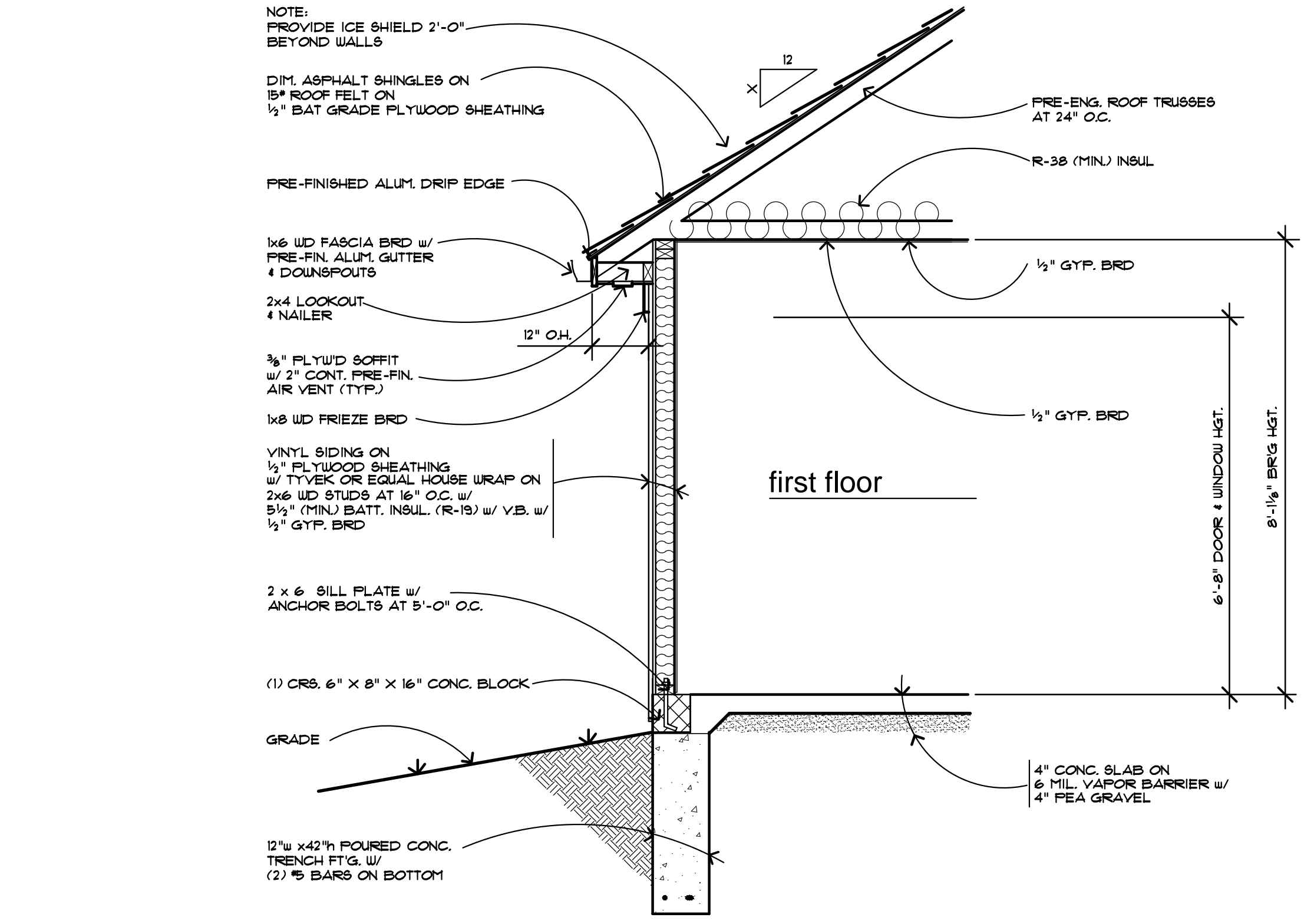
Note:  
WINDOWS WITH SILL HEIGHT OF LESS THAN 24" SHALL COMPLY WITH SECTION R602.

Note:  
PROVIDE GUARDS ON ALL SLIDING DOORS PRIOR TO INSTALLATION OF REQUIRED LANDINGS PER MIRC SEC. 313



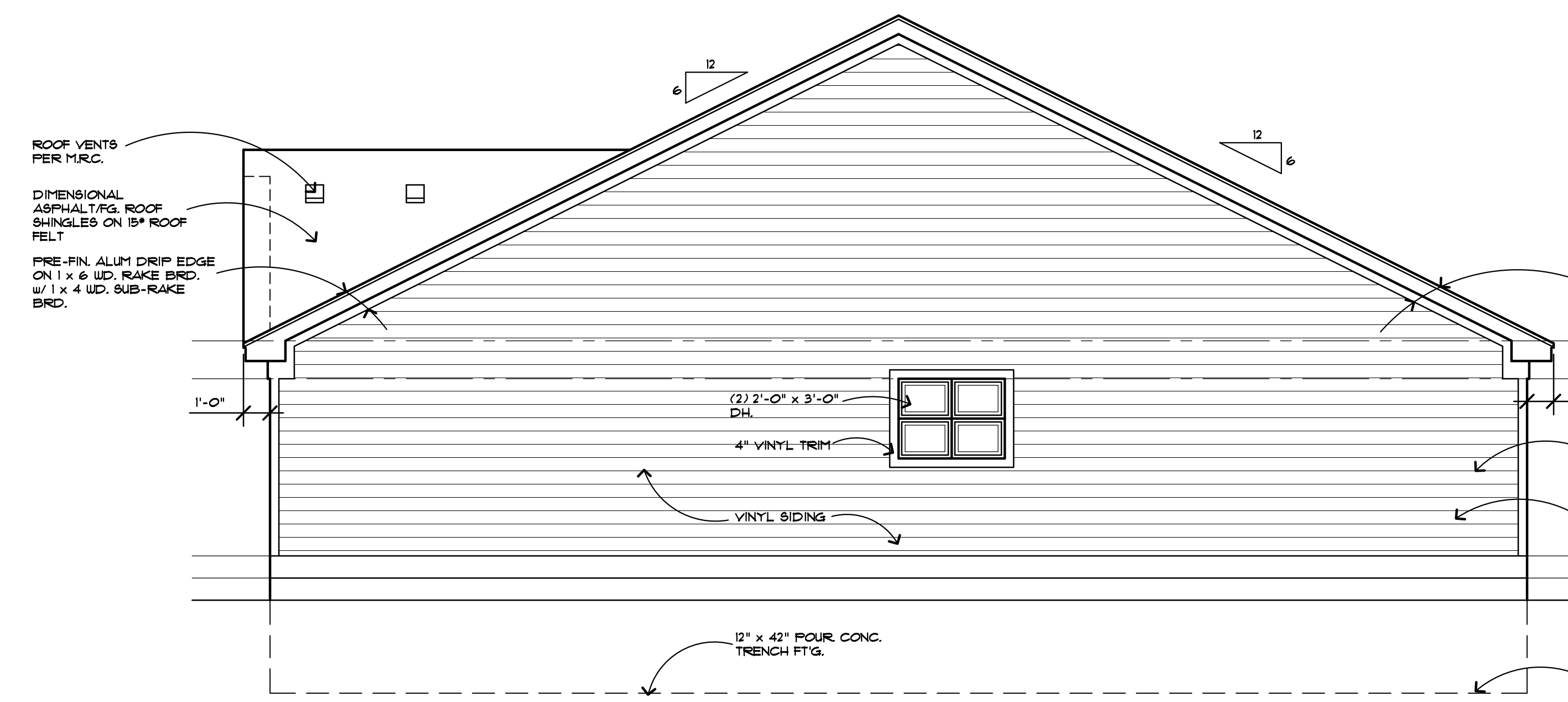
rear elevation

1/4" = 1'-0"



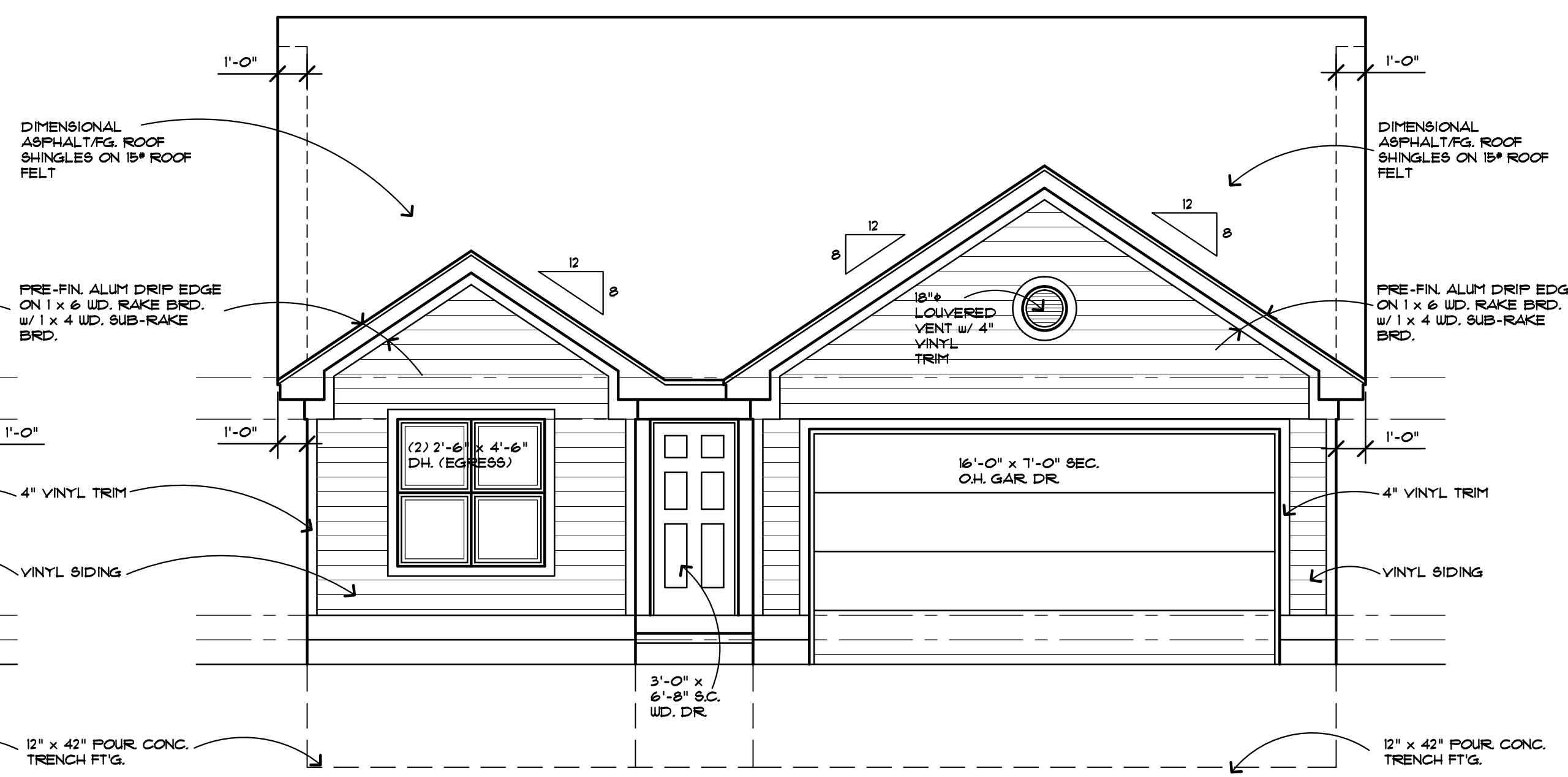
typ. wall section

1/2" = 1'-0"



right elevation

1/4" = 1'-0"



front elevation

1/4" = 1'-0"